



SHEBOYGAN COUNTY ECONOMIC DEVELOPMENT CORPORATION

BUSINESS RESOURCES - SITE SELECTION - COMMUNITY DEVELOPMENT

SERVICES for Businesses

Testimonials

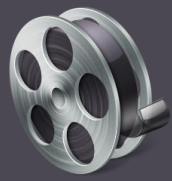
Thank you so much for everything. You have been so thorough and helpful to provide focus for the best results.

- Jim Krautkramer,
Glacier Transit & Storage
Plymouth, WI

"I'd recommend to any business in Sheboygan County, before they make plans, talk to the SCEDC, because they are very value added. They've always been proactive, offered out-of-the-box creative ideas, and helped open doors.

- Randy Rudolph,
Rockline Industries
Sheboygan, WI

View Testimonials



www.SheboyganCountyEDC.com/KeepingThePromise

CONTACT US

920-452-2479



Financing Solutions



- Loan programs
- Financial incentives
- Equity investments
- Financial structuring

Location Consultation



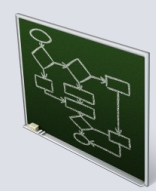
- Special and incentive districts
- Cost considerations
- Community initiatives
- Localized market data

Workforce Concerns



- Training programs
- Hiring incentives
- Job boards
- Staffing agencies
- Education programs
- Internships
- Skills analysis

Cost Control



- Energy saving programs
- Production and supply chain analysis
- Networks and industry clusters
- Benchmarking

Personalized Service



- Addressing questions both big and small
- Removing man-made barriers to growth
- Advocating on your behalf

Trade & Export Support



- Market research
- Distributor searches
- Duty and tariff relief
- Exporting plans

Why Work with Us?



Save Time



Free Services



Save Money



Uncover Opportunities



See Results



Retain Privacy



SHEBOYGAN COUNTY ECONOMIC DEVELOPMENT CORPORATION

BUSINESS RESOURCES - SITE SELECTION - COMMUNITY DEVELOPMENT

About Us

What is the SCEDC?

The Sheboygan County Economic Development Corporation (SCEDC) is a non-profit private/public partnership that offers free information and consulting services to promote and spur business growth in Sheboygan County, WI.

Why do we exist?

The SCEDC was created following several factory closings in 2008-09. Area business and community leaders galvanized economic development efforts by creating the SCEDC. The SCEDC's goals are to:

1. Keep companies in Sheboygan County.
2. Provide companies resources to be competitive in Sheboygan County.
3. Attract new companies to Sheboygan County.

How do we work?

SCEDC staff works directly with companies and their clients to provide timely, accurate information. We serve as both a catalyst and consultant to companies looking to add jobs, make investments, or desire to be competitive in Sheboygan County, Wisconsin. **We allow companies to spend more time on doing what they do best.**



Executive Board Members

Gary Dulmes, Chair
Dulmes Décor

David Aldag, Vice-Chair
Aldag/Honold Mechanical

Tom Liebl, Treasurer
Sheboygan Paper Box

Mel Blanke
Plymouth Industrial
Development Corporation

Adam Payne
Sheboygan County

John Rohde
Century 21 Rautmann/Schils

David Sachse
Landmark Consulting

Peter Thillman
Lakeshore Technical College

Bob Werner
Werner Homes

SCEDC's Mission:
To improve the economic well-being and long-term prosperity of the businesses, residents, and communities of Sheboygan County.

Sheboygan County Economic Development Corporation

508 New York Ave. - Room 209
Sheboygan, Wisconsin 53081

920-452-2479

Servicing Businesses In ALL of Sheboygan County including:

- Plymouth
- Sheboygan
- Sheboygan Falls
- Adell
- Cascade
- Cedar Grove
- Elkhart Lake
- Glenbeulah
- Howards Grove
- Kohler
- Oostburg
- Random Lake
- Waldo

Our Executive Director



Randy Hopper
Executive Director
(920) 452-2479
Hopper@SheboyganCountyEDC.com

www.SheboyganCountyEDC.com