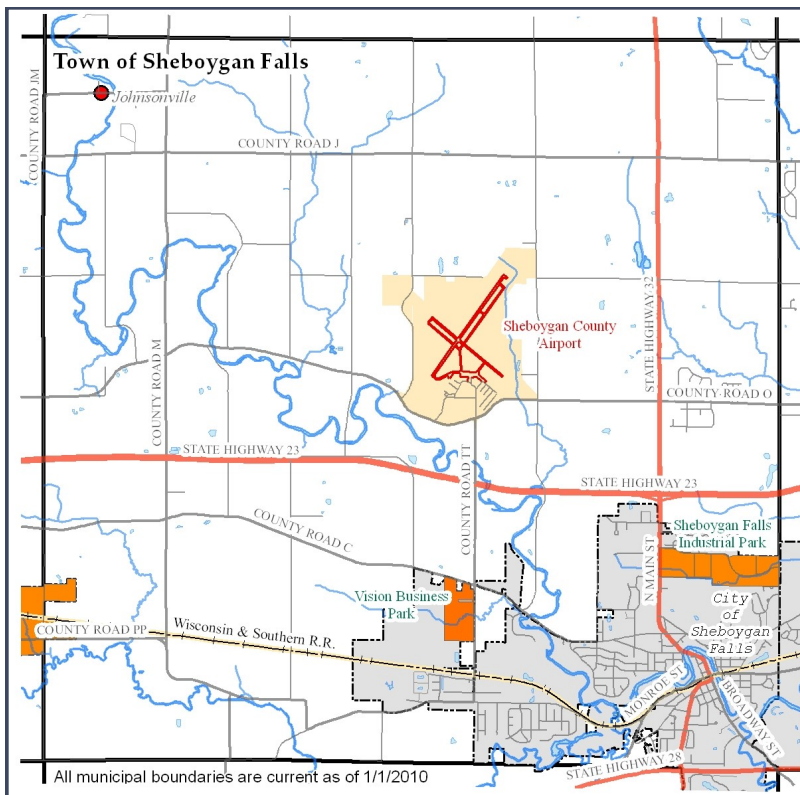




Town of Sheboygan Falls, WI ECONOMIC PROFILE

The Town of Sheboygan Falls is an agricultural community with a quiet, rural country atmosphere, with limited commercial and industrial development. The Town is located in the central portion of Sheboygan County. The Town includes the hamlet of Johnsonville. Farmland, open-space, and river corridors are great assets for the township. Future residential and business development will take these assets into account. The Town of Falls is home to the Sheboygan County Memorial Airport.



POPULATION

The Town of Sheboygan Falls's population is projected to decline; however, it has continued to increase in recent years.

2000.....	1,706
2009.....	1,795
2015 (Projected).....	1,653
2009-2015 (% Growth).....	-7.9%

Wisconsin Department of Administration

MAJOR EMPLOYERS

- Johnsonville Sausage
- KW Electric
- Sheboygan County YMCA (Camp Y KODA)
- JSM Communications
- Majestic Meadows Dairy
- Paul's Cabinet Shop
- Peichl Farms Inc.

*Corporate headquarters

Wisconsin Department of Workforce Development, February 2010

LABOR FORCE

In 2000, the Town had 1,056 residents in the labor force. In March of 2010, Sheboygan County has a total of 63,379 people in the labor force and an unemployment rate of 10.0%.

Wisconsin Department of Workforce Development & U.S. Census Bureau

COMMUTE TIME

In 2000, the mean travel time to work was 17 minutes, below the United States average of 25.5 minutes.

U.S. Census Bureau, 2000

TOWN CONTACT INFORMATION

W3860 County Road O
Sheboygan Falls, WI 53085
(920) 467-1922
www.townofsheboyganfalls.com

Town of Sheboygan Falls, WI ECONOMIC PROFILE

TOWN OF SHEBOYGAN FALLS
Corporate HQ of Johnsonville Sausage



UTILITIES

WATER & SEWER

There is no public water system in the Town, individual wells are used. Most of the Town is served by private on-site sewage treatment systems. Approximately 200 acres of the Town of Sheboygan Falls, primarily within Section 13, is within the Sheboygan Sanitary District #2, but currently service is not extended into the Town of Falls.

ELECTRICITY

Provided by Sheboygan Falls Utilities, Plymouth Utilities, and Alliant Energy, depending on location.

NATURAL GAS

Provided by Wisconsin Public Service (WPS)

TELECOMMUNICATIONS

Landline phone service is provided by Verizon North or AT&T. Broadband internet is offered by Charter Communications where available.

TRANSPORTATION

The Town is intersected State Highways 23, 28, and 32. Rail service is not available; however there is a movement to bring service back to the area from the east. Sheboygan County Memorial Airport (SMB) is located in the township.

HOUSING

Using 2000 Census data, the median housing value in the Village was \$122,900 and is higher than the median housing value of the entire County.

U.S. Census Bureau, 2000

BUSINESS PARKS

Currently there are no business parks in the Town of Sheboygan Falls. The Town of Sheboygan Falls' business corridor is located along County Road M. The City of Sheboygan Falls has two business parks. The airport may become an industrial park for airport related facilities in the future, which in turn, may make the surrounding lands more desirable for commercial or industrial growth.

INCOME

The Town's median household income in 1999 was \$50,489, which was higher than the State and Federal median household income.

U.S. Census Bureau, 2000

HOUSEHOLD INCOME	SHEBOYGAN COUNTY
Less than \$24,999.....	19.2%
\$25,000-\$34,999.....	12.2%
\$35,000-\$49,999.....	16.9%
\$50,000-\$74,999.....	21.9%
\$75,000-\$99,999.....	15.0%
\$100,000+.....	14.8%

U.S. Census Bureau, 2006-2008 American Community Survey 3-Year Estimates