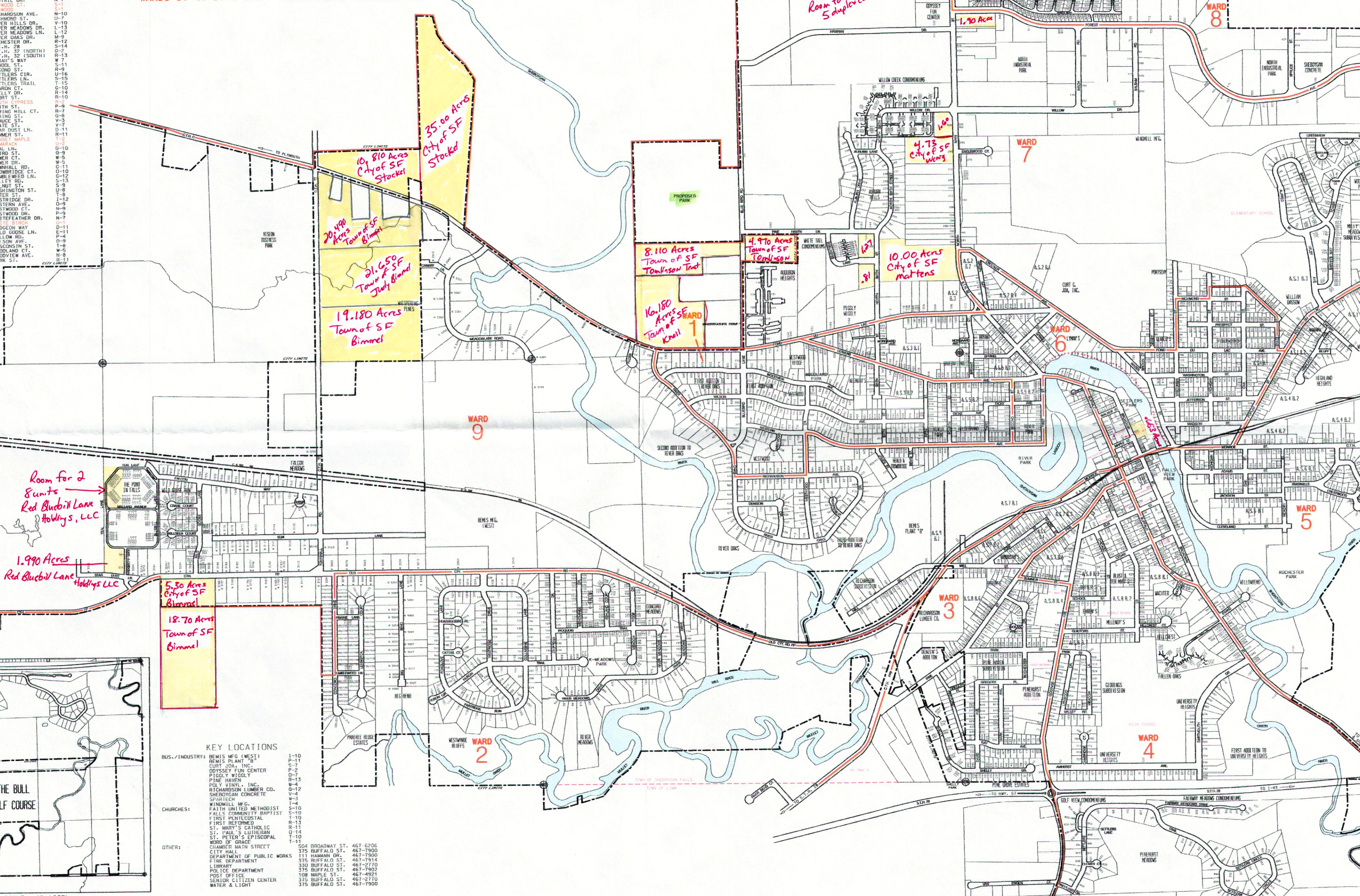


**STREET LOCATION KEY (RED - MOBILE HOME PARK)**

A	ACACIA	5-2	MARK AVE.	H-14
B	ADAMS ST.	U-10	MEADOW LN.	S-13
C	ALDER CT.	L-8	MEADOWARK RD.	J-7
D	ALFRED W. MILEY	X-14	MEADOW RIDGE DR.	L-11
E	AMBERST AVE.	K-12	MENOMINEE DR.	D-9
F	ASHLAND CT.	R-6	MILL ST.	O-12
G	AUBURN DR.	F-5	MORRIS ST.	G-11
H	AUBURN LN.	P-9	NORCROSS AVE.	O-7
I	BALSAM RD.	T-7	NORTH MAIN ST.	O-5
J	BIRMINGHAM	H-12	NORTH ST. (SEE RANGE	L-18)
K	BIG BEND LN.	S-11	OLD C.T.H. RD. PP	L-12
L	BLUEBELL LN.	D-10	PARK ST.	L-10
M	BLUESHIRE LN.	M-9	PARTRIDGE RUN	L-10
N	BOULEVARD PKWY.	M-8	PINE ST.	L-10
O	BOYD CT.	S-8	PINE HAVEN LN.	N-6
P	BROADWAY ST.	B-9	PINEHURST DR.	P-5
Q	BROWN ST.	T-8	PLEASANT DR.	P-5
R	BRYANT CT.	O-8	POPULAR ST.	M-9
S	BUFFALO ST.	T-10	PRAIRIE LA.	G-12
T	C.T.H. C	S-11	PROSPECT ST.	U-7
U	C.T.H. EE	V-13	RANGE LINE RD.	W-6
V	C.T.H. PPP	F-13	RAYMOND DR.	W-6
W	C.T.H. TT	S-10	REDTAIL DR.	N-7
X	C.T.H. Y (EAST)	S-10	REVEREND ST.	S-11
Y	C.T.H. Y (WEST)	S-14	RICHMOND AVE.	N-10
Z	CAMBRIDGE CT.	S-14	RICHMOND DR.	U-7
AA	CANARY LN	S-11	RIVER HILLS DR.	V-10
AB	CATTAIL CT.	L-12	RIVER MEADOWS DR.	L-13
AC	CELESTINE	S-11	RIVER MEADOWS DR.	L-12
AD	CELESTINE	W-7	RIVER OAKS DR.	M-9
AE	CHICAGO ST.	K-12	RIVERVIEW DR.	R-12
AF	CHIPPENAW DR.	K-12	S.L.H. 28	S-14
AG	CLAYTON ST.	O-16	S.T.H. 32 (NORTH)	O-2
AH	CLYDE ST.	O-16	S.T.H. 32 (SOUTH)	R-13
AI	COLUMBINE LN.	C-12	SATURN WAY	S-11
AJ	CONCORD DR.	O-2	SCHOOL ST.	W-7
AK	COVINGTON DR.	O-2	SECOND ST.	U-16
AL	CRESTWOOD CT.	W-10	SETTLERS CIR.	U-16
AM	CRESTWOOD DR.	W-10	SETTLERS TRAIL	T-15
AN	CROCKER AVE.	R-7	SHANNON CT.	U-10
AO	DANBURG CT.	U-13	SHARPEY DR.	R-14
AP	DARTMOUTH DR.	O-14	SHORT ST.	O-2
AQ	DAVID AVE.	M-10	SIXTH ST.	A-8
AR	DENISON CIR.	D-10	SPRING HILL CT.	O-8
AS	DEWEY ST.	O-9	SPRING ST.	U-9
AT	DICKE AVE.	O-9	STATE ST.	V-9
AU	EDMUND LN.	O-8	STATE ST. LN.	U-11
AV	ELM LN	S-10	STATE ST. LN.	R-11
AW	ENGLISWOOD CT.	U-12	STATE ST.	R-11
AX	EVANS CT.	U-12	STATE ST.	R-11
AY	EVINGREEN DR.	O-10	STATE ST.	R-11
AZ	FAIRWAY DR.	P-10	STATE ST.	R-11
BA	FALCON WAY	O-10	STATE ST.	R-11
BB	FALLEN OAKS LN.	U-12	STATE ST.	R-11
BC	FALLS PARK DR.	U-18	STATE ST.	R-11
BD	FAIRWAY MEADOWS DR.	P-18	STATE ST.	R-11
BE	FIFTH ST.	R-9	STATE ST.	R-11
BF	FIRST ST.	R-9	STATE ST.	R-11
BG	FOND DU LAC AVE.	O-3	STATE ST.	R-11
BH	FOREST AVE.	S-3	STATE ST.	R-11
BI	GARDEN DR.	O-9	STATE ST.	R-11
BJ	FOURTH ST.	O-9	STATE ST.	R-11
BK	FOURTH LN.	O-9	STATE ST.	R-11
BL	GARDENS AVE.	O-12	STATE ST.	R-11
BM	GOLDEN OAK CT.	O-2	STATE ST.	R-11
BN	GREEN ACRES DR.	O-7	STATE ST.	R-11
BO	GREEN BAY CT.	W-4	STATE ST.	R-11
BP	GREENVIEW CT.	O-18	STATE ST.	R-11
BQ	GREENVIEW DR.	O-18	STATE ST.	R-11
BR	GULLCREEK ST.	O-12	STATE ST.	R-11
BS	HAMANN DR.	O-3	STATE ST.	R-11
BT	HAPPY LN.	P-5	STATE ST.	R-11
BV	HARMONY CT.	H-10	STATE ST.	R-11
BW	HICKORY ST.	V-10	STATE ST.	R-11
BX	HIGHLAND AVE.	V-12	STATE ST.	R-11
BY	HILLCREST PL.	L-12	STATE ST.	R-11
BZ	HURON DR.	K-13	STATE ST.	R-11
CA	HURON DR.	L-13	STATE ST.	R-11
CB	INDUSTRIAL TR.	U-10	STATE ST.	R-11
CC	JACKSON ST.	U-8	STATE ST.	R-11
CD	JEFFERSON ST.	U-8	STATE ST.	R-11
CE	KAY AVE.	D-14	STATE ST.	R-11
CF	KILBURN CT.	H-11	STATE ST.	R-11
CG	LEAVENS AVE.	P-8	STATE ST.	R-11
CH	LEAVENS AVE.	H-12	STATE ST.	R-11
CI	LEAVENS AVE.	S-13	STATE ST.	R-11
CJ	LEAVENS AVE.	U-9	STATE ST.	R-11
CK	LEAVENS AVE.	D-10	STATE ST.	R-11
CL	LEAVENS AVE.	S-9	STATE ST.	R-11

**DISTRICTS AND WARDS KEY**

- CITY:**  
 WARDS 1, 2 & 9 - ALDERMANIC DISTRICT 1  
 WARDS 3, 4 & 5 - ALDERMANIC DISTRICT 2  
 WARDS 6, 7 & 8 - ALDERMANIC DISTRICT 3
- COUNTY:**  
 WARDS 1, 2, 8 & 9 - SUPERVISORY DISTRICT 18  
 WARDS 3, 4, 5, 6 & 7 - SUPERVISORY DISTRICT 19



Room for 2  
8 units  
Red Bluff Lake  
Holdings, LLC

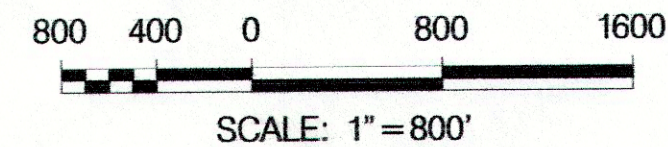
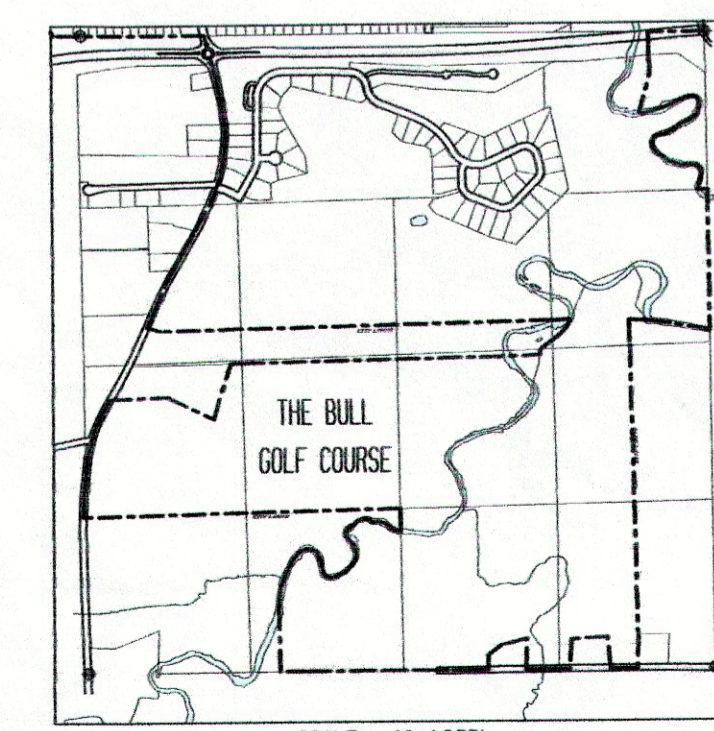
1.990 Acres  
Red Bluff Lake  
Holdings LLC

5.50 Acres  
City of SF  
Bimmel

18.70 Acres  
Town of SF  
Bimmel

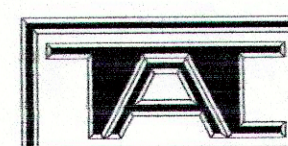
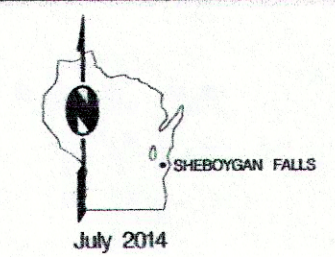
**KEY LOCATIONS**

BUS./INDUSTRY:	BEMIS MFG. (WEST)	P-11
	CURT JOA. INC.	P-2
	DOYSEY FUN CENTER	O-7
	PIGGLY WIGGLY	H-13
	PINE HAVEN	H-13
	POLY VINYL, INC.	V-4
	RICHMOND LUMBER CO.	V-4
	SHERBOGAN CONCRETE	V-4
	SHERBOGAN CONCRETE	V-4
	SPARICH	V-4
CHURCHES:	WINDMILL M.C.	S-10
	FAITH UNITED METHODIST	S-10
	FALLS COMMUNITY BAPTIST	S-10
	FIRST METHODIST	R-11
	FIRST REFORMED	R-11
	ST. MARY'S CATHOLIC	O-14
	ST. PAUL'S LUTHERAN	O-14
	ST. PETER'S EPISCOPAL	T-11
OTHER:	WIND OF GRACE	S-10
	CHAMBER MAIN STREET	S-10
	CITY HALL	S-10
	DEPARTMENT OF PUBLIC WORKS	S-10
	FIRE DEPARTMENT	S-10
	LIBRARY	S-10
	POLICE DEPARTMENT	S-10
	POST OFFICE	S-10
	SENIOR CITIZEN CENTER	S-10
	WATER & LIGHT	S-10
	504 BROADWAY ST.	467-6206
	375 BUFFALO ST.	467-7900
	111 HAMANN DR.	467-7900
	375 BUFFALO ST.	467-7914
	375 BUFFALO ST.	467-7914
	375 BUFFALO ST.	467-7914
	375 BUFFALO ST.	467-7914
	375 BUFFALO ST.	467-7914
	375 BUFFALO ST.	467-7914
	375 BUFFALO ST.	467-7914
	375 BUFFALO ST.	467-7914
	375 BUFFALO ST.	467-7914



THIS MAP COMPUTER GENERATED ON INTERGRAPH.  
 INFORMATION COMPILED FROM PREVIOUS MAPS,  
 CERTIFIED SURVEY MAPS, SUBDIVISION PLATS, USGS  
 QUADRANGLE MAPS AND COUNTY HIGHWAY DEPT.  
 MAPS. ORIGINAL T.A.C. BASE MAP - 1978.

**CITY OF SHEBOYGAN FALLS WISCONSIN**  
 POPULATION JANUARY 2014: 7,853



PREPARED BY:  
**TECHNICAL ASSISTANCE CO.**  
 SHEBOYGAN FALLS, WI 53085  
 PHONE (920) 467-6711  
 EMAIL TAC@TACWEB.COM

July 2014